



---

# EIFFEL

---



Opções:  
Acabamento exterior ~ Saia exterior em cobre | Fundo anti-deslizante | Furos para torneiras  
Options:  
Outside finishing ~ Solid copper skirt | Antislip | Tap holes  
**1700 x 680**

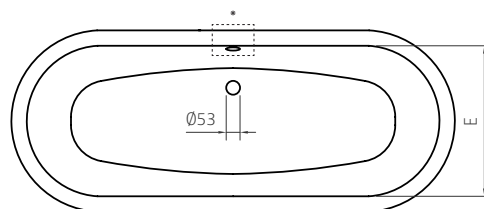
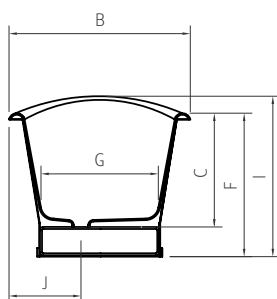
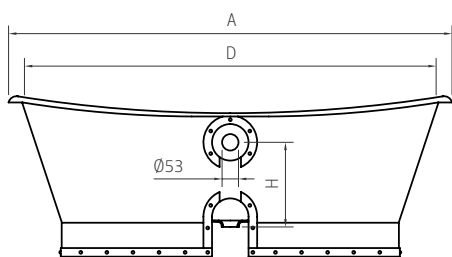


# EIFFEL

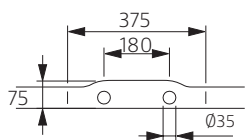
DIMENSÕES - DIMENSIONS (mm)

<b>1700</b>	<b>1700</b>	<b>680</b>	<b>492</b>	<b>1620</b>	<b>585</b>	<b>635</b>	<b>465</b>	<b>390</b>	<b>695</b>	<b>250</b>	-	-	-	-	-	-
	<b>A</b>	<b>B</b>	<b>C</b>	<b>D</b>	<b>E</b>	<b>F</b>	<b>G</b>	<b>H</b>	<b>I</b>	<b>J</b>	<b>L</b>	<b>M</b>	<b>N</b>	<b>O</b>	<b>P</b>	<b>Q</b>

1700	
<b>KG</b>	<b>LT</b>
PESO/WEIGHT <b>198</b>	VOL. <b>215</b>



\* Opção ~ Option



Pormenor da ába ~ Rim detail



Medidas Aproximadas | Válvula de segurança disponível com 63mm

Approximate measurements | Overflow hole available with 63mm

